



# SHTRIH - PC200 C3

PC LABEL PRINTING SCALES

## Scales with Multimedia Functions!



Additional Display



Wi-Fi, Ethernet and 2 USB ports as standard



Robust Printer with Label-Out Indicator

# SHTRIH-PC200 C3

PC LABEL PRINTING SCALES

## Scales with Multimedia Functions!

### DESCRIPTION

**SHTRIH-PC200 C3** is a label printing scale with a time-tested weigh module and printing mechanism designed by SHTRIH-M and a highly reliable all-in-one POS terminal with touch screen produced by Flytech (Taiwan).

**SHTRIH-PC200 C3** scale with multimedia functions is a premium solution not only for weighing products and printing labels, but for making additional profit on advertisement displayed during idle time or returned along with a selected product. The scale can be easily programmed through remote access.

**SHTRIH-PC200 C3** is a perfect solution for self service stores where customers weigh goods and print labels by themselves. The scale is intended mainly for fruits, vegetables, confectionary, and frozen goods departments. It can also be used for prepacking, and models equipped with a second customer LCD display — for over-the-counter operation.

Because of the full-fledged industrial PC inside the all-in-one POS terminal, the size of the PLU base loaded into the scale is unlimited. Touch screen technologies facilitate the intuitive operation of the scale.

Free software of the scale has a well thought-out and user-friendly interface and allows for a quick PLU base browsing. A large selection of embedded reports optimizes staff operation and stock flow control.

Rugged metal housing and a water-proof display are designed for hard exploitation of the scale in supermarkets and hypermarkets. The impressive "frameless" (True Flat) design of the all-in-one terminal will fit the interior of any stylish store.



### MAIN FEATURES

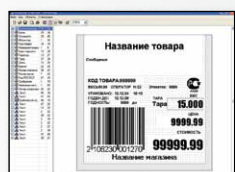
- True Flat (frameless) display and user-friendly and intuitive software interface
- Indication of weight, price, and cost of goods, as well as displaying various graphics and texts information (pictures of goods, recipes, advertisement)
- Remote programming and updating
- Communication with back-office software via text files
- Various embedded reports developed to control operator time and product sales and for further analysis in the back office software
- Embedded label editor for an easy label design programming using texts and graphics
- Visual browsing of the PLU base for item selection and displaying their details
- Operator Mode interface and Help&Training Mode



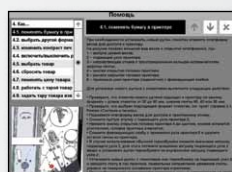
■ Self-Service Mode Interface



■ Operator Mode Interface



■ Embedded Label Editor



■ Help&Training Mode Interface

### SPECIFICATION

Maximum – Max, kg	15
Minimum – Min, g	40
Verification Interval, g	2/5
Tare Range, kg	-6
Label Size (WxH), mm	30 x 20 to 58 x 120
Print Speed, mm/sec	до 100
Head Reliability, km of paper	50
Power Source	~220VAC, 50Hz
Power Consumption, Watt	100
Operating Temperature, °C	+10 to +40
Platter Size (WxD), mm	350 x 310
Dimensions (WxDxH), mm	355 x 460 x 570
Product Weight, kg	up to 19
CPU	Intel Atom PineTrail D525 DualCore 1.8GHz (cache L2 1Mb), 13Watt
Chipset	CPU integrated graphics + ICH8M
RAM	2xDDR3 SO-DIMM (standard 2Gb, up to 4Gb)
HDD	SATA HDD 2.5" (no less than 250Gb)
Display Type and Size	15" TFT LCD, Resistive
Display Brightness	250 cd/m2
Display Resolution	1024 x 768
Interface Ports	2xUSB 2.0, 1xLAN (RJ45, 10/100/1000 Mbit/sec)
Second Display (option)	8.4" LCD display (non-touch)
Wi-Fi (option)	802.11 b/g/n (USB dongle through USB 2.0 port)
Installed OS	Windows XP Embedded



19-4 Leninskaya Sloboda st., 115280, Moscow, Russia  
 Tel +7 (495) 787-6090 | Fax +7 (495) 787-6099  
 info@shtrih-m.ru  
 www.shtrih-m.ru

